

## City Council Special Meeting Agenda

**Date:** 08-16-12  
**Time:** 4:15 p.m.  
**Location:** City Hall Council Chambers

- Mayor Nancy Tia Brown
- Donny Anderson
- Charles Cloud
- Bryan Edwards
- Jerry Fritz
- Steve Miller
- Stan Wolz
- City Administrator, Jenni Rosencranse
- Administrative Services Officer, Cindy Baker
- City Attorney, Scott Kolpitcke

- Discuss striping the intersection of 14<sup>th</sup> and Meadow Lane Avenue.
  - Council Reference: Bryan Edwards
- Discuss other avenues for artistic expression by City's youth.
  - Staff Reference: Jenni Rosencranse, City Administrator
- Review Council Agenda for August 21, 2012.
- Staff and Council Updates.
  - Cindy – Domain Server Changeover
- Meeting Reminders:
  - Tuesday, August 21, 2012 – Regular Council Meeting 7:00 p.m. City Council Chambers (pre-meeting at 6:30 p.m.)
  - Thursday, August 30, 2012 – Council Work session 4:15 p.m. City Council Chambers.

Time Adjourned: \_\_\_\_\_

THIS IS THE INTERSECTION OF 14<sup>TH</sup> AND MEADOW LANE.

I HAVE HAD SEVERAL COMPLAINTS ABOUT THE STOP SIGN ON 14<sup>TH</sup> TRAVELING SOUTH. THAT IT IS TOO FAR FROM THE ACTUAL INTERSECTION AND BY THE TIME YOU CAN SEE AROUND TO THE LEFT YOU ARE IN THE WEST BOUND LANE. I HAVE ALSO SPOKE WITH PEOPLE ABOUT THIS, TURNING EAST ONTO MEADOW LANE. ALTHOUGH WE HAVE HAD NO ACCIDENTS, I DO THINK IT IS AN ISSUE THAT CAN BE EASILY ADDRESSED. SIMPLY BY STRIPPING 14<sup>TH</sup>, AND BY PAINTING THREE AREAS TO BETTER DIRECT TRAFFIC. STEVE PAYNE GAVE ME THE INCLUDED PRINT OUT OF WHAT THIS COULD LOOK LIKE. THE BLACK RECTANGLE BOXES ARE STOP BLOCKS. PAINTED STOPPING POINTS. THIS PLAN INCLUDES MOVING THE STOP SIGN ON 14<sup>TH</sup> FROM NORTH OF THE ALLEY TO THE PAINTED ZONE. I WOULD SUGGEST THIS BE PROTECTED WITH CURB STOPS. ALSO THE YIELD SIGN IN THE LARGEST AREA PROTECTED AS WELL. THIS IS FOR YOU TO THINK ABOUT AND GIVE FEEDBACK. A PRICE IS OUTLINED AS WELL. I THINK IT IS WELL WORTH CORRECTING A DANGEROUS INTERSECTION.

BRYAN

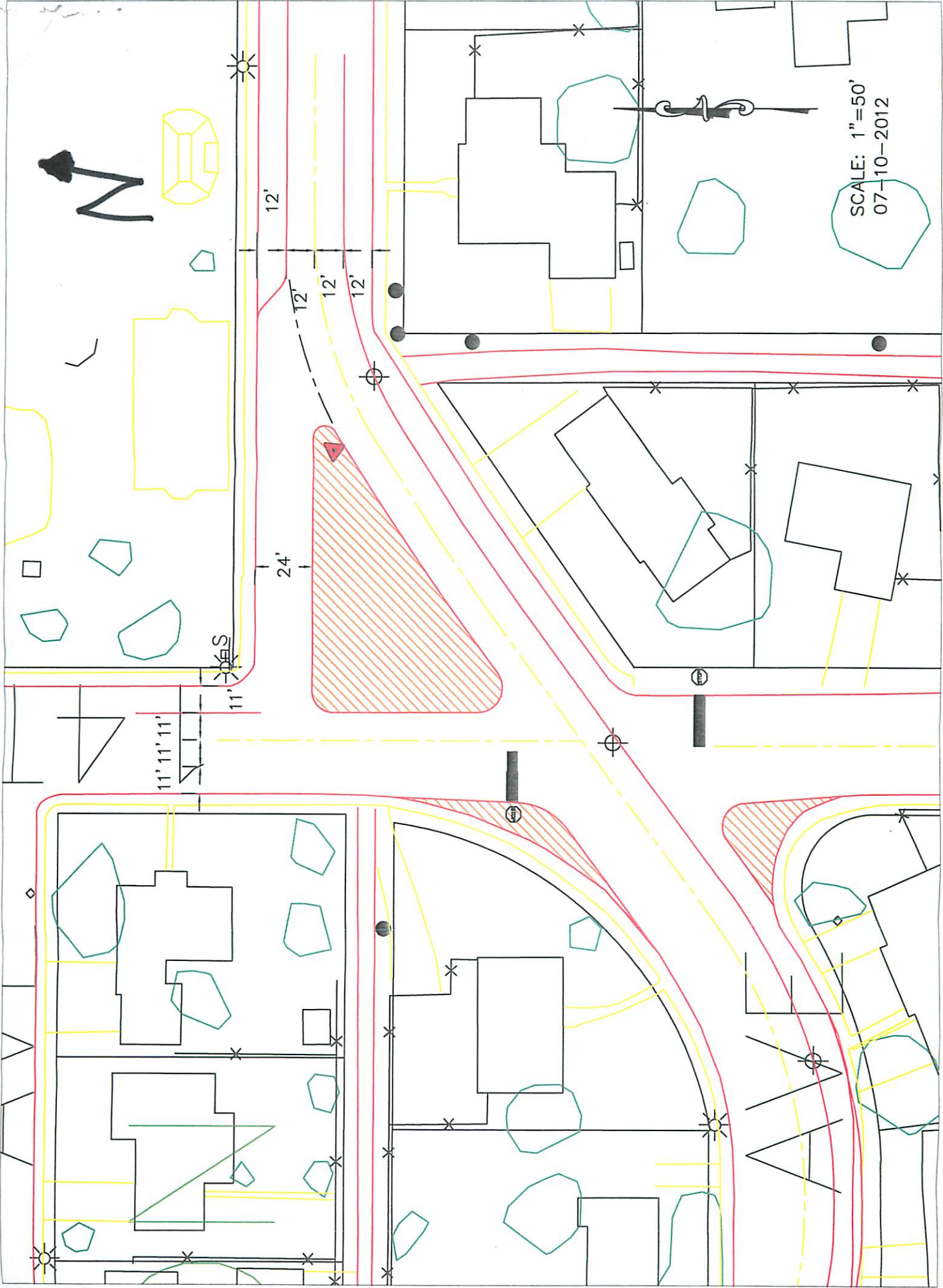
**Meadowlane & 14th Street Intersection Estimate**

<u>Quantity</u>	<u>Item</u>	<u>Rate</u>	<u>Total Per Item</u>
1	Stop Sign	\$30.00	\$30.00
1	Yield Sign	\$30.00	\$30.00
2	12' Telespar	\$39.85	\$79.70
2	30" Tubing	\$15.00	\$30.00
5	Bag Quickcrete	\$5.00	\$25.00
10	Gallon Yellow Paint	\$24.59	\$245.90
32	Hours Labor	\$26.00	\$832.00
10	Parking Blocks	\$30.00	\$300.00

**Total Project Cost**

**\$1,572.60**

Estimates on time were made while considering a total of two laborers.



SCALE: 1"=50'  
07-10-2012

12'

12'

12'

12'

24'

11' 11' 11'

DES