

1

2

3

4

5

6

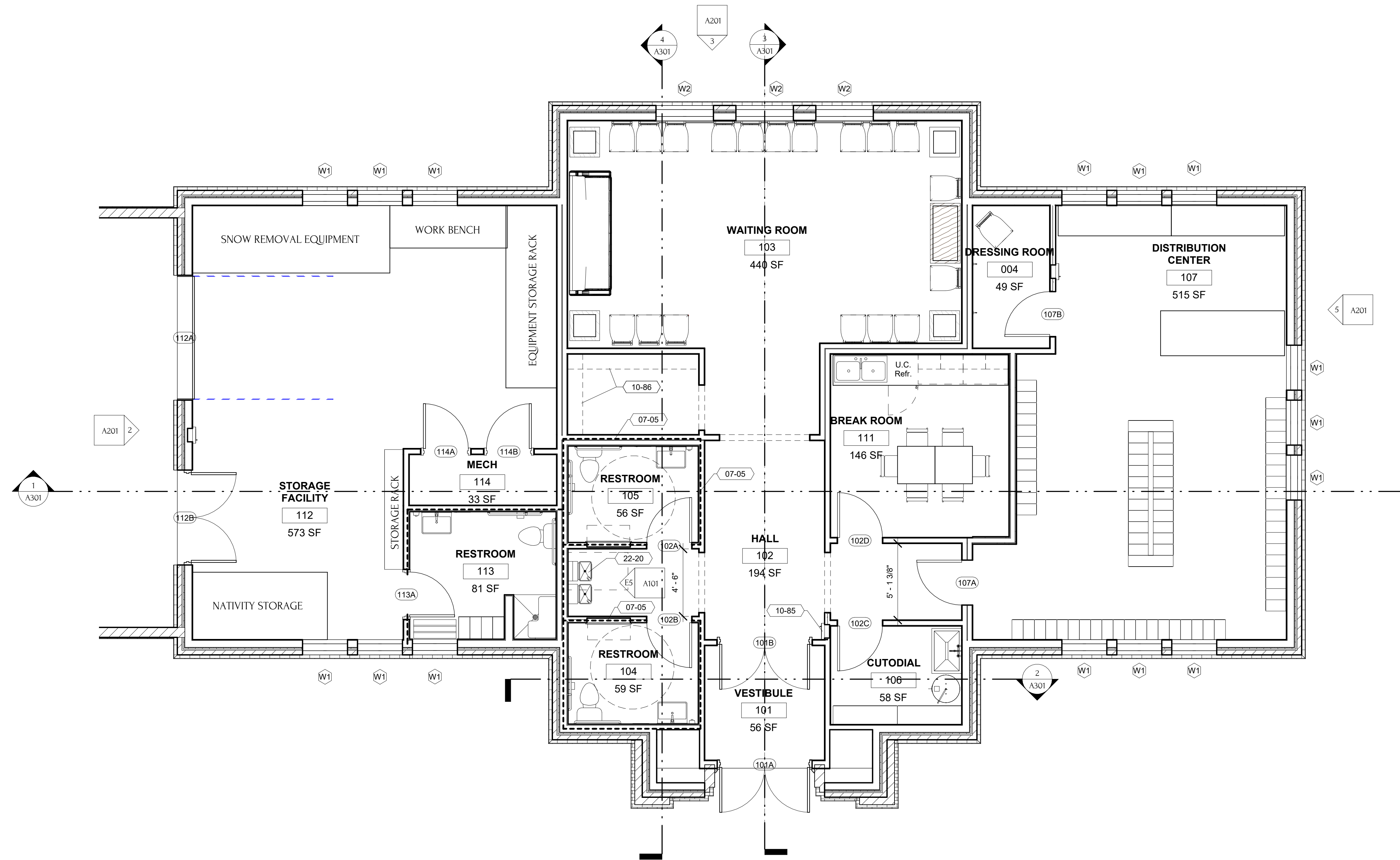
A

B

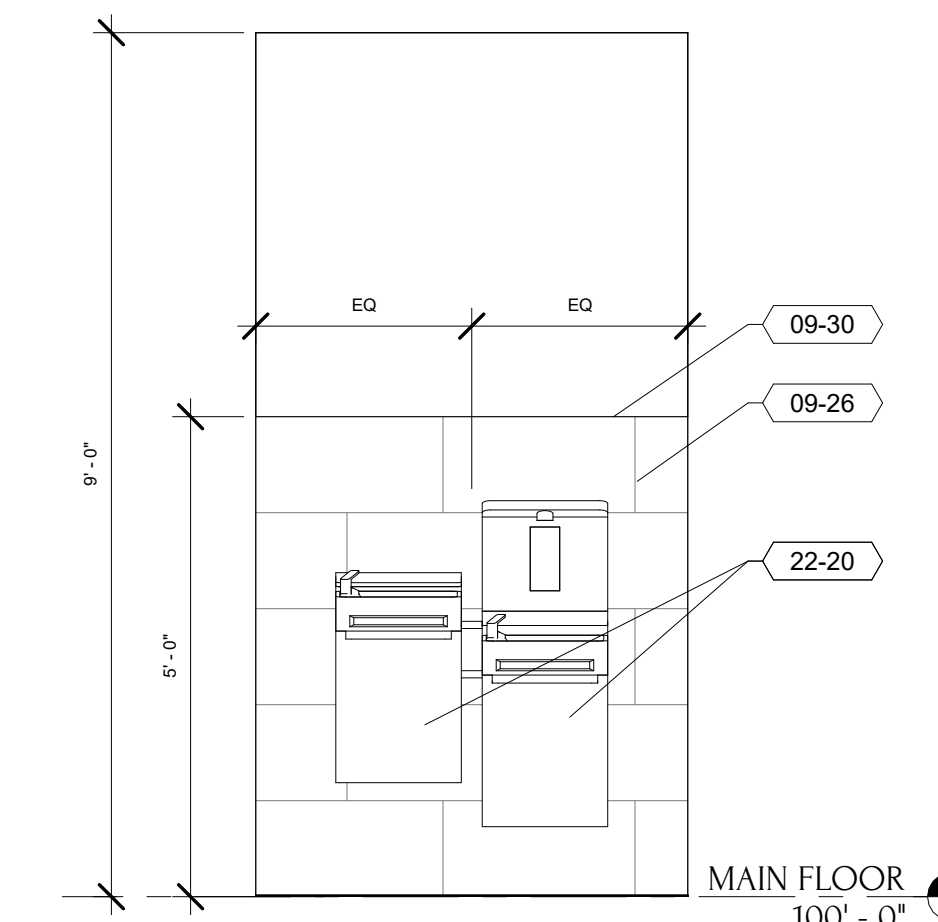
C

D

E



C3 MAIN FLOOR PLAN
1/4" = 1'-0"



E5 DRINKING FOUNTAIN
1/2" = 1'-0"

MATERIAL / SPECIFICATION KEYNOTES	
07-05	BLANKET SOUND INSULATION
09-26	CERAMIC GLAZED WALL TILE - SEE FINISH SCHEDULE, DETAILS & SPECIFICATION
09-30	TILE METAL EDGE STRIPS SEE DETAILS & SPECIFICATION
10-85	FIRE EXTINGUISHER, SEE SPECIFICATION
10-86	HAT & COAT RACK, SEE DETAIL W4501 AND SPECIFICATION
22-20	DRINKING FOUNTAIN, SEE PLUMBING DRAWINGS & SPECIFICATION

FLOOR PLAN GENERAL NOTES	
1.	SEE SHEET A102 FOR DIMENSIONS.
2.	SEE SHEET A111 FOR WALL TYPES.
3.	PROVIDE SOLID BLOCKING IN THE WALL AT ALL DOOR STOPS, VISUAL DISPLAY BOARDS, TOILET COMPARTMENTS, LAVATORY SUPPORTS, WALL HUNG CABINETS, AND AT ALL OTHER EQUIPMENT AND ACCESSORY LOCATIONS.
4.	VAPOR RETARDER UNDER CONCRETE SLAB - SEE MECHANICAL DRAWINGS.
5.	FOR LOCATION OF RETURN AIR DUCT IN STUD WALLS, SEE MECHANICAL DRAWINGS.
6.	PROVIDE A 2x FIRE BLOCKING IN ALL WALLS AT CEILING AND FLOOR LEVELS.
7.	ALL WALLS EXCEEDING 10 FEET IN HEIGHT, PROVIDE 2x FIRE BLOCKING NOT TO EXCEED 10'-0" O.C. VERTICALLY.
8.	FOR DOOR SCHEDULES, SEE SHEET A601.
9.	SEE CIVIL SHEETS FOR CONTINUATION OF CONCRETE SIDEWALK AT ENTRIES AND ALL OTHER SITE CONCRETE.
10.	IF AHJ REQUIRES A "KNOX" BOX, ARCHITECT WILL INDICATE THE LOCATION PER THE AHJ'S REQUIREMENT. IF NOT REQUIRED, REMOVE REFERENCES TO A "KNOX" BOX AND DO NOT PROVIDE ONE.



EDIFICE
DESIGN + ARCHITECTURE

352 NORTH FLINT STREET
KAYSVILLE, UT 84037
385.432.3332 www.EDIFICEdna.com

stamp:

consultant:

THE CHURCH OF
JESUS-CHRIST OF LATER
DAY SAINTS

owner:
CODY WYOMING TEMPLE -
ANCILLARY BUILDING
MAIN STREET 1800 SOUTH
BOUNTIFUL, UTAH

project:
PROJECT STATUS
**SCHEMATIC
DESIGN**
DECEMBER 2022

REVISIONS	
DATE	DESCRIPTION

Project #: 22204.01
COPYRIGHT
Edifice Design + Architecture, LLC reserves the right to these documents and to all designs contained herein. No copies or alterations are to be made without the permission of Edifice DNA. All plans published and sold by Edifice DNA are protected under the Federal Copyright Act, Title 17 of the United States Code, and Chapter 37 of the Code of Federal Regulations.

**MAIN
LEVEL
FLOOR
PLAN
A101**